

# HOW SWEET IT IS

BLUESY SHUFFLE SWING, ♩=140-146

ARR. JOHN KRISTENSEN

A

I NEED-ED THE SHEL-TER OF

10

SOME-ONE'S ARMS AND THERE YOU WERE I NEED-ED SOME-ONE TO UN-DER

14

STAND MY UPS AND DOWNS AND THERE YOU WERE WITH SWEET LOVE AND

18

WITH DE-VO - TION DEEP - LY TOUCHED BY MY E - MO - TION I WAN - NA STOP AND THANK YOU

22

SA - BY I WAN - NA STOP AND THANK YOU SA - BY HOW SWEET IT IS

26

TO BE LOVED BY YOU HOW SWEET IT IS TO BE LOVED BY

31

You

VOCAL

33 **C**



CLOSE MY EYES AT NIGHT WON-DERING WHERE WOULD I BE WITH-OUT YOU IN MY LIFE.

37



EV'-RY-THING WAS SUCH A BORE SEEMS TO BE THE SAME AS IT USED TO BE BE-FORE.

41 **D**



YOU CHANGED MY LIFE IN SO MA-NY WAYS. YOU GAVEME LOV-ING FOR SO MA-NY DAYS. I WAN-NA STOP

45



AND THANK YOU SA - BY I WAN-NA STOP AND THANK YOU SA - BY

49



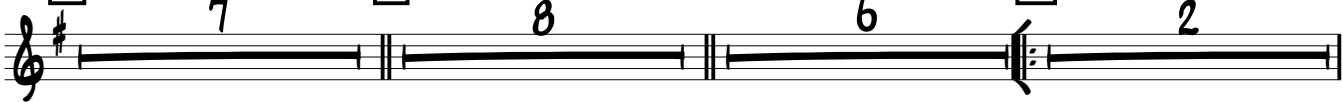
HOW SWEET IT IS TO BE LOVED BY YOU

53



HOW SWEET IT IS TO BE LOVED BY YOU

57 **E**



80 **H**



YOU WERE BET-TER TO ME THAN I WAS TO MY - SELF. FOR

86



ME THERE IS YOU AND THERE IS NO-BO-DY ELSE. I WAN-NA STOP AND THANK YOU SA - BY I WAN-NA STOP

90



AND THANK YOU SA - BY HOW SWEET IT IS TO BE LOVED BY

94

Musical staff for measure 94, featuring a treble clef, a key signature of one sharp (F#), and a 7/8 time signature. The staff contains a sequence of notes: a quarter note G4, a quarter rest, a quarter rest, a quarter note G4, a quarter note A4, a quarter note B4, a quarter note A4, a quarter note G4, and a quarter note F#4. The lyrics "You" are positioned below the first measure, and "HOW SWEET IT IS TO BE LOVED BY" are positioned below the remaining notes.

You HOW SWEET IT IS TO BE LOVED BY

98

Musical staff for measure 98, identical to the staff for measure 94. The lyrics "You" and "HOW SWEET IT IS TO BE LOVED BY" are positioned below the notes.

You HOW SWEET IT IS TO BE LOVED BY

102

Musical staff for measure 102, identical to the staff for measure 94. The lyrics "You" and "HOW SWEET IT IS TO BE LOVED BY" are positioned below the notes.

You HOW SWEET IT IS TO BE LOVED BY

106

Musical staff for measure 106, identical to the staff for measure 94. The lyrics "You" and "HOW SWEET IT IS TO BE LOVED BY" are positioned below the notes.

You HOW SWEET IT IS TO BE LOVED BY

110

Musical staff for measure 110, identical to the staff for measure 94. The lyrics "You" are positioned below the first measure, and the rest of the staff is empty.

You